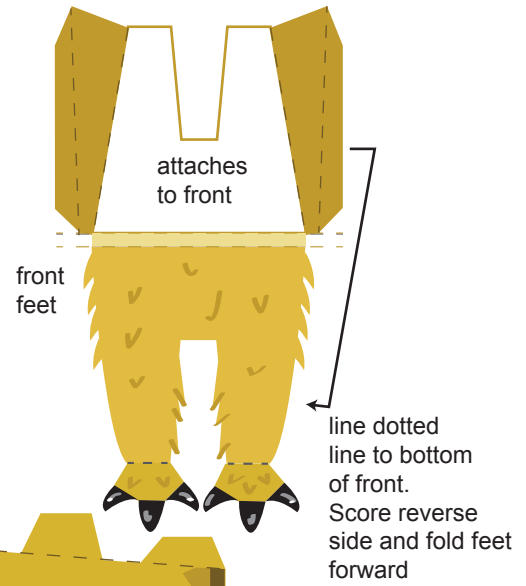


WWW.CHEMICALNINE.COM
B.RATLIFF 2012

front
head sits here on this inset



front
feet

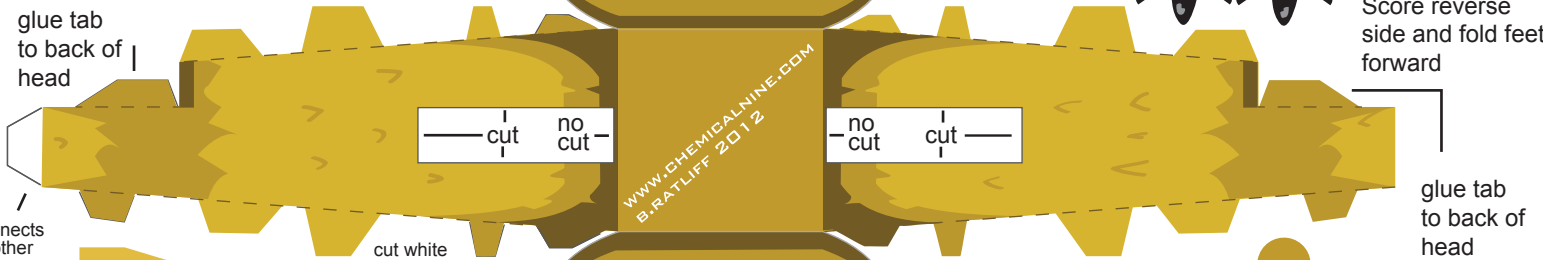


attaches
to front

front
feet

line dotted
line to bottom
of front.
Score reverse
side and fold feet
forward

glue tab
to back of
head



cut no cut

no cut cut

WWW.CHEMICALNINE.COM
B.RATLIFF 2012

glue tab
to back of
head

flap
connects
to other
site



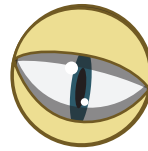
ears

cut white
rectangles,
fold flap out and
insert foot



hair

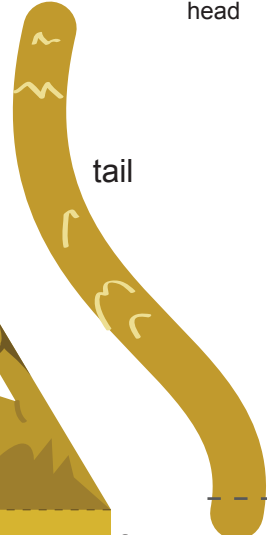
back



eyes
glue yes
on front head/face

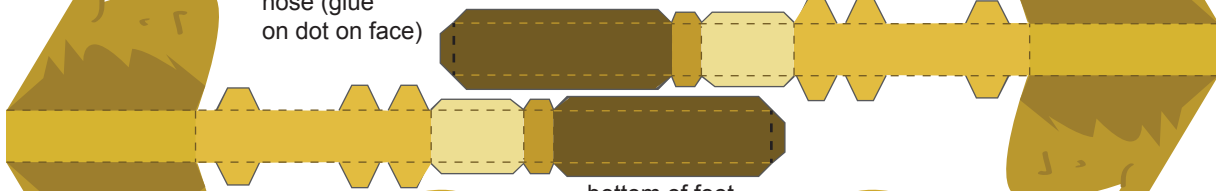


tail



nose (glue
on dot on face)

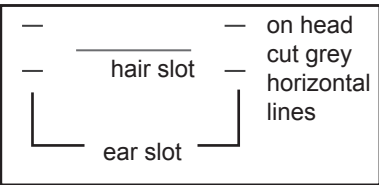
foot



bottom of foot

foot

fold
tail,
glue
to back



on head
cut grey
horizontal
lines

hair slot

ear slot

head/face



glue tabs on both
sides to
face side first,
then put glue on
remaining tabs and
fold back of head to
attach